

LET ME BREAK IT DOWN FOR YOU!

with Eddie the Enzyme



All trademarks are owned by Société des Produits
Nestlé S. A., Vevey, Switzerland or used with permission.
©2020 Nestlé. All rights reserved. ZEN-0022-060220

NOTE TO PARENTS AND CAREGIVERS

This book is intended to be read to a child by a parent or caregiver and is provided for educational purposes only. The book is not intended to substitute for discussions with a healthcare provider. It is important to always talk to the child's doctor about any questions related to their symptoms or treatment.

WHAT IS ZENPEP®?

ZENPEP® (pancrelipase) is a prescription medicine for people who cannot digest food normally because their pancreas does not make enough enzymes. ZENPEP may help your body use fats, proteins, and sugars from food. ZENPEP contains a mixture of digestive enzymes (lipases, proteases, and amylases) from pig pancreas. ZENPEP is safe and effective in children.

IMPORTANT RISK INFORMATION

WHAT IS THE MOST IMPORTANT INFORMATION I SHOULD KNOW ABOUT ZENPEP?

- ZENPEP may increase your chance of having a rare bowel disorder called fibrosing colonopathy. This condition is serious and may require surgery. The risk of having fibrosing colonopathy may be reduced by following the dosing instructions your doctor gave you. **Call your doctor right away if you have any unusual or severe:** stomach area (abdominal) pain, bloating, trouble passing stool (having bowel movements), nausea, vomiting, or diarrhea.
- Take ZENPEP exactly as prescribed. Do not take more or less ZENPEP than directed by your doctor.

BEFORE YOU TAKE ZENPEP, TELL YOUR DOCTOR:

- If you are allergic to pork (pig) products; have a history of blockage of your intestines, or scarring or thickening of your bowel wall (fibrosing colonopathy); have gout, kidney disease, or high blood uric acid (hyperuricemia); have trouble swallowing capsules; have any other medical condition; are pregnant or plan to become pregnant; are breastfeeding or plan to breastfeed.
- **About all the medicines you take**, including prescription and non-prescription medicines, vitamins, and herbal supplements.

IMPORTANT RISK INFORMATION (cont'd)

HOW SHOULD I TAKE ZENPEP®?

- **Take ZENPEP exactly as your doctor tells you.**
- **Do not crush or chew the ZENPEP capsule or its contents, and do not hold the capsule or contents in your mouth.** This may cause irritation in your mouth or change the way ZENPEP works in your body. See Medication Guide and talk to your doctor for additional directions.

SIDE EFFECTS

- **ZENPEP may cause serious side effects, including** worsening of swollen, painful joints (gout) caused by an increase in blood uric acid levels and **allergic reactions** including trouble with breathing, skin rashes, or swollen lips. Call your doctor right away if you have any of these symptoms.
- **The most common side effects of ZENPEP include** belly pain, gas, and headache.
- ZENPEP and other pancreatic enzyme products are made from the pancreas of pigs, the same pigs people eat as pork. These pigs may carry viruses. Although it has never been reported, it may be possible for a person to get a viral infection from taking pancreatic enzyme products that come from pigs.
- Tell your doctor if you have any side effect that bothers you or does not go away. These are not all the possible side effects of ZENPEP. For more information, ask your doctor or pharmacist.

Please see accompanying Medication Guide and full Prescribing Information.

Eddie the Enzyme's GALAXY FACTS

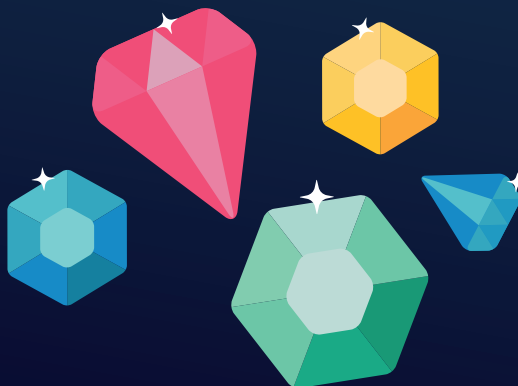
The pancreas is a large gland behind the stomach and next to the small intestine. The pancreas does two main things: it releases powerful digestive enzymes into the small intestine to aid the digestion of food and it also releases the hormones insulin and glucagon into the bloodstream.

Exocrine pancreatic insufficiency (EPI) is a condition that occurs when the pancreas fails to provide the necessary amount of digestive enzymes. Due to a lack of these enzymes, people with EPI, a condition often associated with cystic fibrosis, cannot properly digest the nutrients in food such as fats, proteins, and carbohydrates.



Asteroids = Substrates

The tiny bits of grilled cheese that Max swallows turn into substrates. Fats, proteins, and carbohydrates are all substrates that need to be broken down and turned into energy to help fuel the body.



Gems = Energy

Energy helps sustain the body's internal functions, repairs, builds and maintains cells and body tissues, and supports the external activities that enable us to interact with the physical world.

Planets = Organs

Organs, such as the stomach, pancreas, small intestine, liver, and gallbladder are all a part of the digestion process. Without the help of enzymes, these organs would not be able to break down food properly.

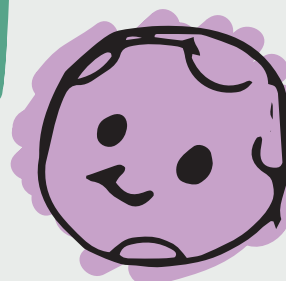
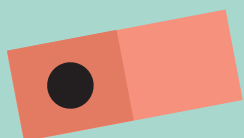
Eddie's Active Site Claws = Active Sites

The region on an enzyme that binds to a protein or other substrates during a reaction. Active sites are what help break down the substrates into smaller parts so they can be used by the body for energy and other functions!

The Digestive Way Galaxy = The Digestive System

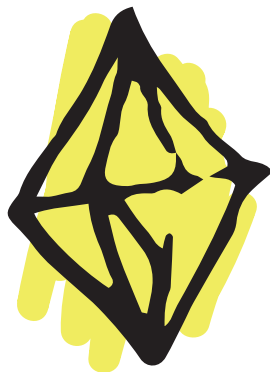
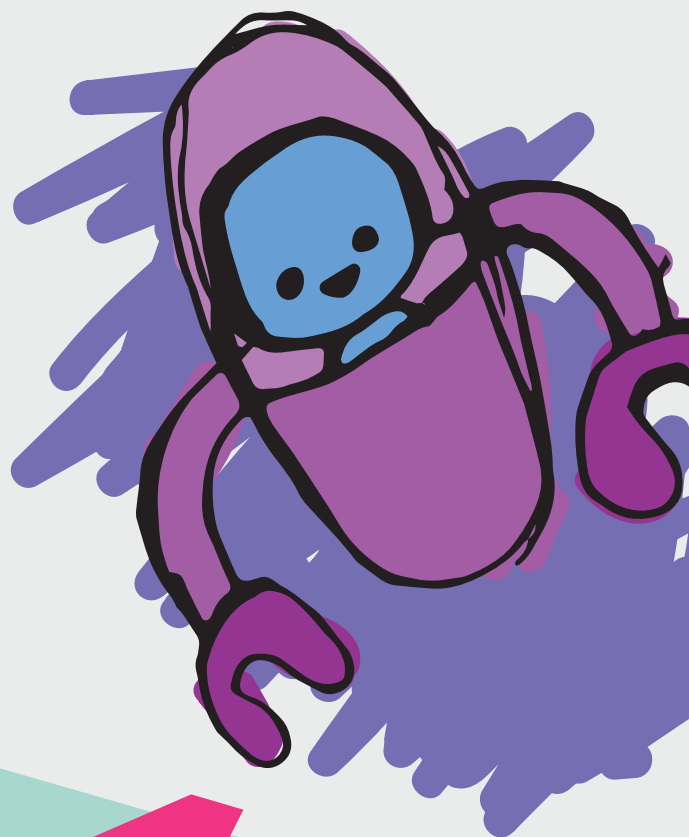
The digestive system is a group of organs working together to convert food into energy and basic nutrients to fuel the entire body.

Please see accompanying Medication Guide and full Prescribing Information.





**LET ME BREAK IT
DOWN FOR YOU!**
With Eddie the Enzyme



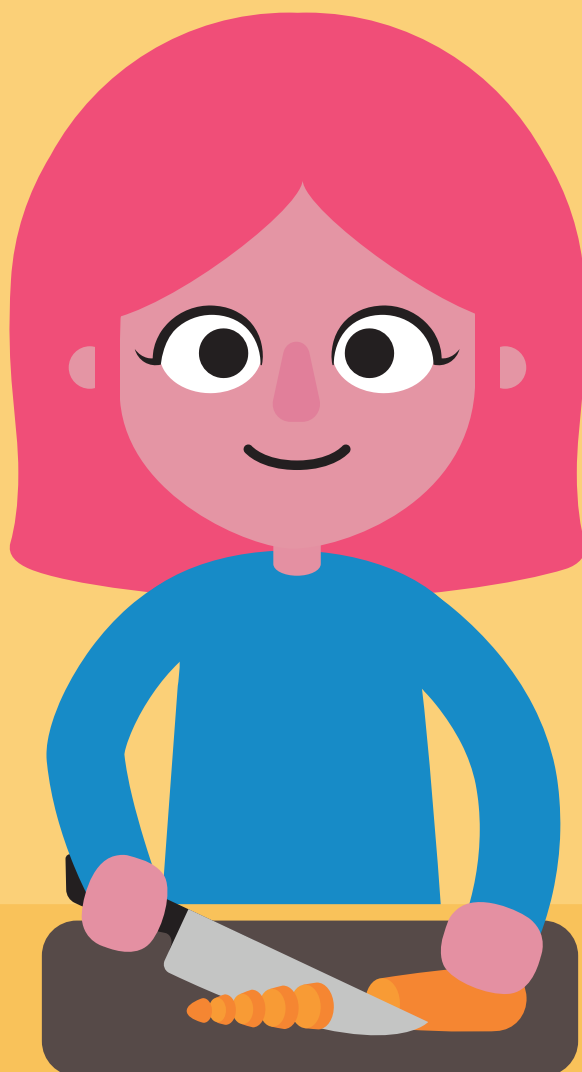
Please see accompanying Medication Guide and full Prescribing Information.

It's lunchtime
at Max's house.

Mom is

**CHOP CHOP
CHOPPING**

carrots in the kitchen.



Baxter the dog looks up at
Max's lunch, wagging his tail...

ZENPEP Important Risk Information – What is ZENPEP®?

ZENPEP (pancrelipase) is a prescription medicine for people who cannot digest food normally because their pancreas does not make enough enzymes. ZENPEP may help your body use fats, proteins, and sugars from food. ZENPEP contains a mixture of digestive enzymes (lipases, proteases, and amylases) from pig pancreas. ZENPEP is safe and effective in children.

"Time to take your enzymes,"
calls Mom.

"Okay,"
says Max hesitantly before
taking a bite out of his extra
gooey grilled cheese.

"Mommmm...?"
asks Max.

"Yes Max?"
says Mom.



Please see accompanying Medication Guide and full Prescribing Information.

"Do you think Baxter needs to have enzymes too?"

"This medicine is for you Max, not Baxter," says Mom.

"You see, a body part near your tummy called the pancreas doesn't make enough enzymes on its own... "

"That means that when you eat, you need extra help to digest your food properly, so that your body can use the food you eat."

"When you swallow your enzymes," Mom explains, "it helps break down the little pieces of food in your body."

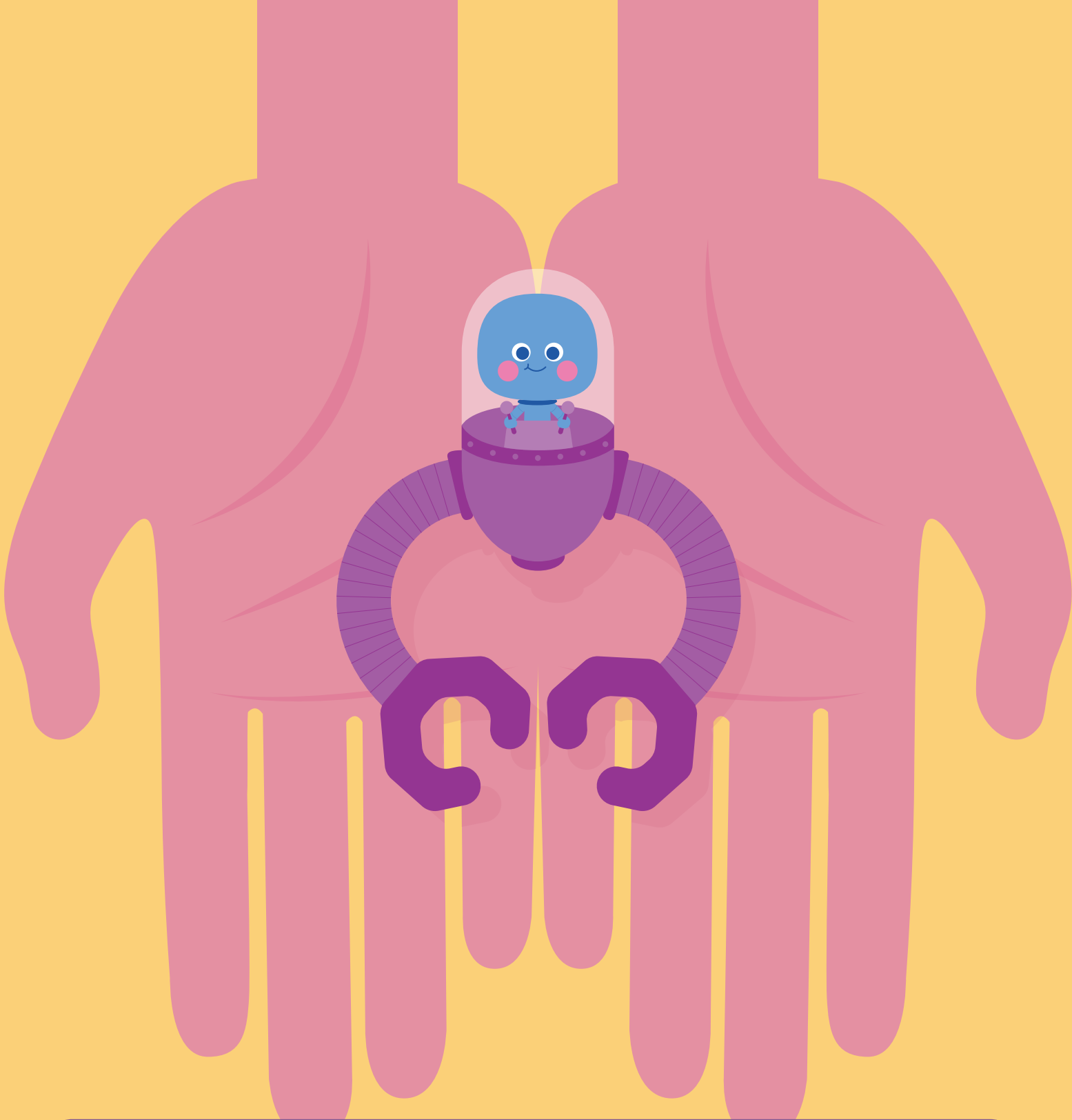


Please see accompanying Medication Guide and full Prescribing Information.



ZENPEP Important Risk Information – What is the most important information I should know about ZENPEP®?

ZENPEP may increase your chance of having a rare bowel disorder called fibrosing colonopathy. This condition is serious and may require surgery. The risk of having fibrosing colonopathy may be reduced by following the dosing instructions your doctor gave you. **Call your doctor right away if you have any unusual or severe:** stomach area (abdominal) pain, bloating, trouble passing stool (having bowel movements), nausea, vomiting, or diarrhea. Take ZENPEP exactly as prescribed. Do not take more or less ZENPEP than directed by your doctor.



ZENPEP Important Risk Information – Before you take ZENPEP®, tell your doctor:

If you are allergic to pork (pig) products; have a history of blockage of your intestines, or scarring or thickening of your bowel wall (fibrosing colonopathy); have gout, kidney disease, or high blood uric acid (hyperuricemia); have trouble swallowing capsules; have any other medical condition; are pregnant or plan to become pregnant; are breastfeeding or plan to breastfeed.

About all the medicines you take, including prescription and non-prescription medicines, vitamins, and herbal supplements.

Max looks confused.

What Mom said sounds very smart,
but what really happens when this
medicine goes inside his body?



Max and Baxter's eyes grow
wider as they stare at the
strange, little spaceship in
front of them.

Please see accompanying Medication Guide and full Prescribing Information.

"Hello, Earthling!
Eddie the Enzyme here,
ready for liftoff in

3
2
1..."






ZIP!
ZOOM!
FLASH!

“Off to the digestive
way galaxy we go!”



Please see accompanying Medication Guide and full Prescribing Information.

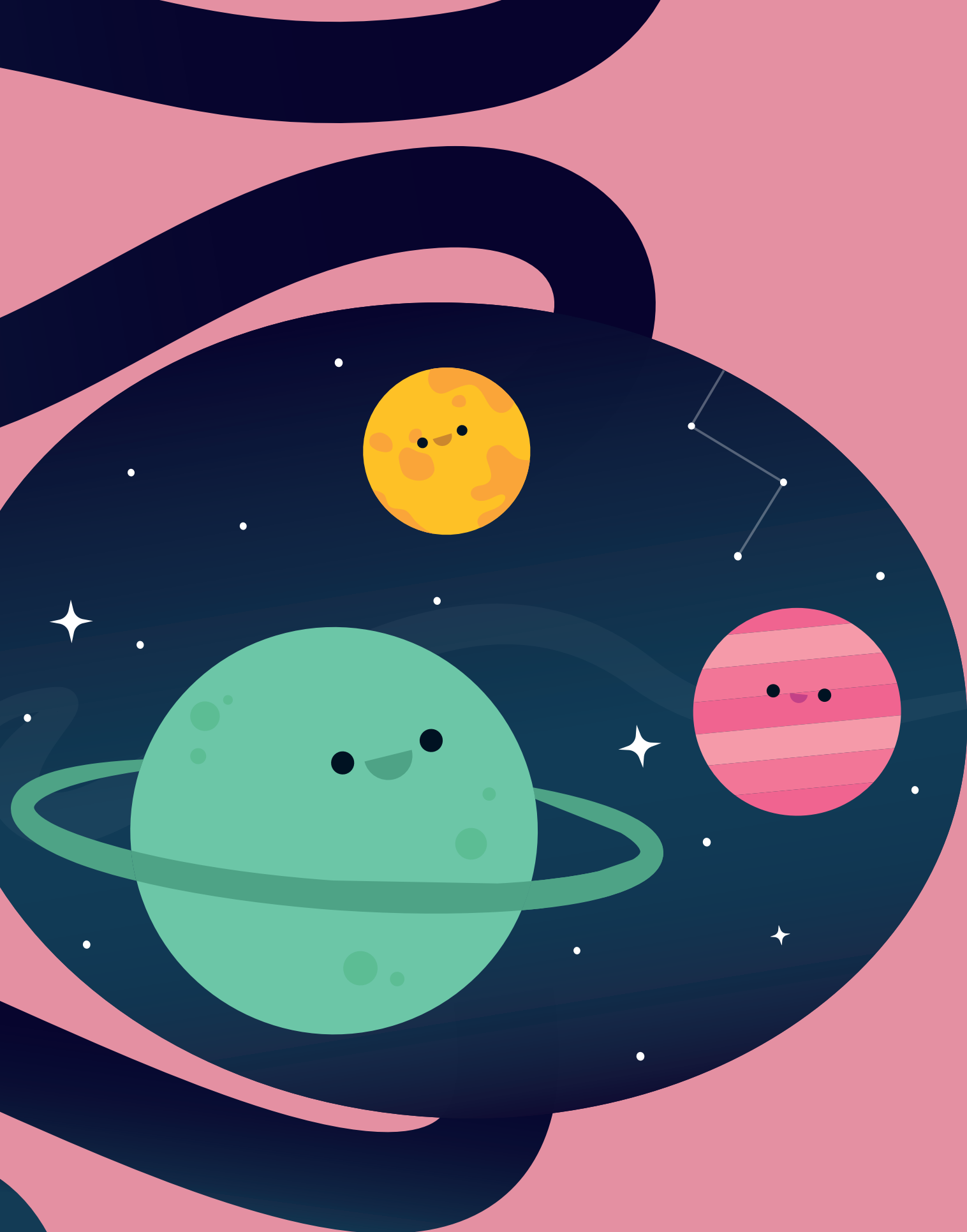


"It's up to me to help
the planets of the
digestive way galaxy
break down asteroids!"
exclaims Eddie.

Max takes another bite
of his yummy sandwich.

ZENPEP Important Risk Information – How should I take ZENPEP®?

Take ZENPEP exactly as your doctor tells you. Do not crush or chew the ZENPEP capsule or its contents, and do not hold the capsule or contents in your mouth. This may cause irritation in your mouth or change the way ZENPEP works in your body. See Medication Guide and talk to your doctor for additional directions.



Please see accompanying Medication Guide and full Prescribing Information.





"MAYDAY, MAYDAY!"

Asteroids are in sight.


I repeat, asteroids are in sight,"
warns Eddie, as he shifts his
active site claws into turbo gear.

"Will Eddie the Enzyme be able
to break down the asteroids?"
Max asks Baxter.

"LET ME BREAK IT DOWN FOR YOU!"

exclaims Eddie.

Please see accompanying Medication Guide and full Prescribing Information.



"See these claws?
They're enzyme claws!
Enzymes like me are special
proteins that help break down
the food you eat,"
Eddie explains.

ZENPEP Important Risk Information – Side Effects

ZENPEP® may cause serious side effects, including worsening of swollen, painful joints (gout) caused by an increase in blood uric acid levels and **allergic reactions** including trouble with breathing, skin rashes, or swollen lips. Call your doctor right away if you have any of these symptoms. **The most common side effects of ZENPEP include** belly pain, gas, and headache.



Please see accompanying Medication Guide and full Prescribing Information.

As asteroids fly around, Eddie helps break them down with his active site claws.




Please see accompanying Medication Guide and full Prescribing Information.



ZENPEP Important Risk Information – Side Effects (continued)

ZENPEP® and other pancreatic enzyme products are made from the pancreas of pigs, the same pigs people eat as pork. These pigs may carry viruses. Although it has never been reported, it may be possible for a person to get a viral infection from taking pancreatic enzyme products that come from pigs.



With the help of Eddie's active site claws, the asteroids turn into a cluster of tiny gems that move through the planets of the digestive way galaxy.

ZENPEP Important Risk Information – Side Effects (continued)

Tell your doctor if you have any side effect that bothers you or does not go away. These are not all the possible side effects of ZENPEP®. For more information, ask your doctor or pharmacist.




POW

Please see accompanying Medication Guide and full Prescribing Information.



Please see accompanying Medication Guide and full Prescribing Information.




Max eats the last bit of his grilled
cheese and washes it down with
a giant glass of water.

GULP!

"Three cheers for Eddie the Enzyme,"
the planets shout.

"He's helped the galaxy once again!"





With his lunchtime mission complete, Eddie the Enzyme zooms off. He won't return until Max's next meal or snack.

ZENPEP Important Risk Information – What is the most important information I should know about ZENPEP®?

ZENPEP may increase your chance of having a rare bowel disorder called fibrosing colonopathy. This condition is serious and may require surgery. The risk of having fibrosing colonopathy may be reduced by following the dosing instructions your doctor gave you. **Call your doctor right away if you have any unusual or severe:** stomach area (abdominal) pain, bloating, trouble passing stool (having bowel movements), nausea, vomiting, or diarrhea. Take ZENPEP exactly as prescribed. Do not take more or less ZENPEP than directed by your doctor.



Please see accompanying Medication Guide and full Prescribing Information.



"Thanks, Eddie!"

yells Max, as Baxter

BARKS

in agreement.

"Eddie?" asks Mom,
sounding surprised.

"Eddie the Enzyme of course!"
says Max excitedly.

"He's a space sidekick in my
tummy who helps break down
asteroids so that my body
can use the food I eat!"

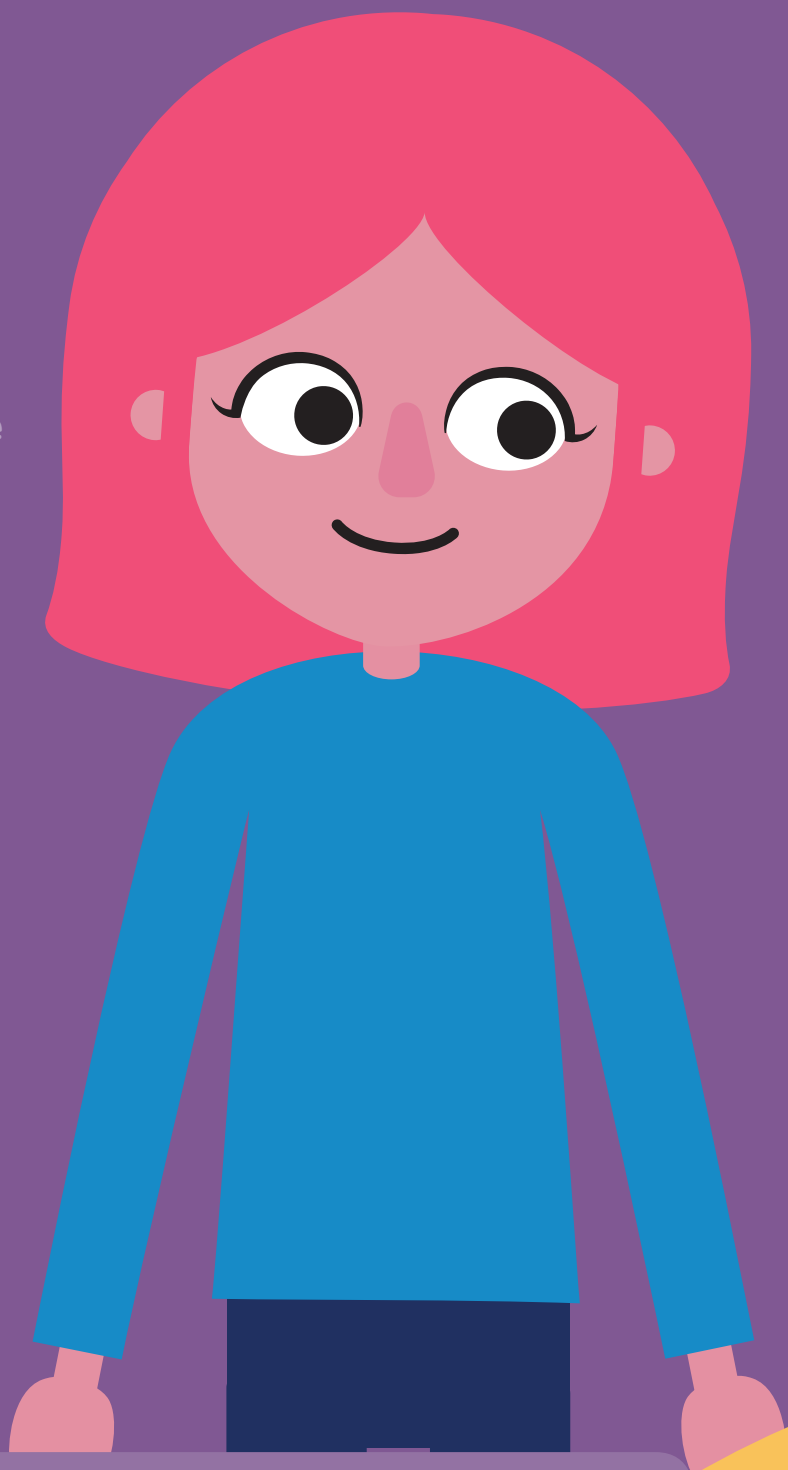


Please see accompanying Medication Guide and full Prescribing Information.

"Wow, Maxy!" says Mom.

"It sounds like Eddie the Enzyme is a very special helper."

Max looks down at his empty plate. Now that he understands the importance of Eddie the Enzyme in his tummy, he doesn't want the great galaxy adventure to end.



ZENPEP Important Risk Information – Before you take ZENPEP®, tell your doctor:

If you are allergic to pork (pig) products; have a history of blockage of your intestines, or scarring or thickening of your bowel wall (fibrosing colonopathy); have gout, kidney disease, or high blood uric acid (hyperuricemia); have trouble swallowing capsules; have any other medical condition; are pregnant or plan to become pregnant; are breastfeeding or plan to breastfeed.

About all the medicines you take, including prescription and non-prescription medicines, vitamins, and herbal supplements.

Please see accompanying Medication Guide and full Prescribing Information.

"When will my next
adventure be, Mom?"

